



# July 4<sup>th</sup> Greetings, 2002



Dear

4 July 2002

Greetings again from New Mexico. The last six months have passed quickly and many things have changed for us here. The big news is of Linda's mother.

## SAD NEWS

In our Christmas letter we told how Linda's mother's health had deteriorated and she had to move into a nursing home in September. It seemed to be good for her and she felt better. She was able to celebrate her 90<sup>th</sup> birthday on 24 December and then come to our home on Christmas Day. Later, she was in and out of the hospital due to pneumonia. Finally she was hospitalized on 1 March and died on 17 March. She was buried in the National Cemetery in Santa Fe where Linda's dad had been buried six years ago.



Frances Beatrice Kliwer Baxter  
24 Dec 1911 17 Mar 2002

At our home on Christmas Day with Samantha.

We miss Bea but rejoice that her pain is over and she is at home with her Lord.

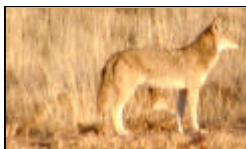
## KLIEWER FAMILY REUNION

In 1932, as Bea's father was dying of cancer, the Kliwer family decided to get together for their first reunion in Fairview, Oklahoma. The reunions have been held every five years since then. At the reunion in 1997, Linda agreed to head up the 2002 event. We are presently busy with that, with help from cousins in Fairview. The reunion will be on 3 - 4 August. That should be our next motor home trip.

## BOSQUE DEL APACHE



On 11 February, we went to Bosque Del Apache with a busload of other senior adults from church. Last year we got to see a Whooping Crane, but the crane did not spend the winter there this year. We did see eagles, sandhill cranes, coyotes, and Canada geese.



Coyote, cranes and  
Canada geese.



## ASTRONOMY AND DINOSAURS AT GHOST RANCH

Robert was asked to go to Ghost Ranch Conference Center in northern New Mexico on 22 - 24 April to present his solar system talk and telescope viewing to about 100 6<sup>th</sup> graders from the Pojoaque Intermediate Schools. He was also asked to do the same at Tohatchie Middle School on 30 April. We decided to make a motor home trip and do both presentations with some sightseeing between and at the end. This would also give us the opportunity to show planets to the students since we could be there at night. (We normally just look at sunspots during the day.) There was also a wonderful alignment of Mercury, Venus, Mars, Jupiter, and Saturn in the evening sky at the time.



Colorful rock formations near Ghost Ranch.

We drove up to Ghost Ranch and spent three nights in their campground. We had time to do some sightseeing there. The Ranch is currently a Presbyterian Conference Center, but earlier in the 1900s it was a dude ranch, and was the home of artist Georgia O'Keefe. It is also famous for its dinosaur quarry where many *Coelophysis* skeletons have been unearthed. (New Mexico's state dinosaur.) The Ranch has an Archaeology and a Paleontology museum.



City Slickers at Ghost Ranch.

Here we are seen reflected in the window of a cabin that was constructed at the Ranch as a prop for the *City Slickers* movie.

We had some problems with gear slippage on the bed in our motor home, so we returned to Albuquerque from Ghost Ranch. Coincidentally, our latest issue of *Trek Talk* was in the mail, and it told us exactly what to do to fix and prevent the bed problem in our Trek motor home. We fixed the problem in a few minutes.

## MESA VERDE AND TOHATCHIE

On Saturday we returned to the road and went to Mesa Verde National Park. This was our first visit to the park since 1998. In 2000, we camped nearby and saw the large fire that burned in the park. Now we were able to see results of that fire. We visited the Cliff Palace ruins.



Cliff Palace at Mesa Verde.

We drove down to Tohatchie from Mesa Verde. The 30<sup>th</sup> was a busy day as Robert gave his presentation to 6 classes. The following day began with a dead engine battery in the Trek. We started it with the coach batteries and drove to Gallup where we bought a new battery. Then we went to Grants, NM, where we spent 3 nights in the KOA campground. That is only 85 miles from home, but we have never spent the time there to see the new El Malpais National Monument.

## EL MALPAIS NATIONAL MONUMENT

The Malpais is an area of recent lava flows. There are also several cinder cone volcanoes in the area as well as ice caves. We had seen them previously, so we concentrated on visiting the other features of the area. There are many sink holes and lava tubes in the monument. Robert climbed down into one of the tubes. We hiked to



see some other collapsed lava tubes. It was very rough climbing up and down over the broken blocks of basalt.



**Large Lava Tube.**

We hiked to see the lava falls.



**Linda at Lava Falls.**

We went up on the sandstone cliffs that overlook the freshest lava flow



**Linda on sandstone cliffs.**

**SALINAS NATIONAL MONUMENT**

Southeast of Albuquerque are three old Spanish missions. They are Abo, Quarai, and Gran Quivira. Together, they make up Salinas National Monument.



**Quarai mission ruins.**



**Car parked in Claunch.**

We went to visit the missions with our senior adult group, and had lunch at the almost ghost town of Claunch.

**LAKE POWELL**

**(Glenn Canyon National Recreation Area)**

From 19 – 28 June we took a trip to Lake Powell with James, Norma Jean, Stacy, and Chris. They took their Suburban and towed their trailer. We towed their boat behind our motor home. On the way, we stopped at Meteor Crater near Winslow, Arizona.

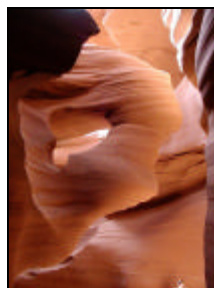


**Robert, Linda, and Stacy at Meteor Crater.**

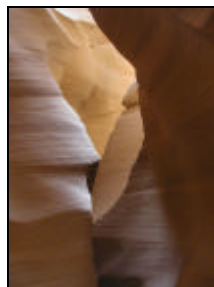
We all camped in the Wahweap RV park. Much of our activity was on the lake, but we did visit Glen Canyon Dam and also hiked through lower Antelope Canyon. Antelope is a beautiful slot canyon. It gained some notoriety in 1997 when 11 tourists died there when they were swept away by a flash flood.



**Entering and inside Antelope Canyon.**



**Inside the fantastic canyon - 2.**



**Inside the fantastic canyon - 3.**

Rainbow Bridge National Monument is located in one of the side canyons of Lake Powell. We went there by boat.



**Inside the fantastic canyon - 4.**



**Robert and Linda at Rainbow Bridge.**

We had been at Lake Powell in 1998, but this time the lake water level was much lower due to the drought we have been experiencing for at least three years. (57 feet below maximum level) On our way home from Lake Powell we stopped at Grand Canyon National Park.



**Robert and Linda at Grand Canyon.**

**E-MAIL CHANGE**

Our primary Internet Service Provider has changed to Comcast.net. Please note that our newer e-mail address is [RMalseed@comcast.net](mailto:RMalseed@comcast.net) We still have our CompuServe address, however.

**THE BOTTOM LINE**

We continue to be thankful for the Lord's provision for us. We trust in Him, and pray that you will do likewise and enjoy a wonderful summer of 2002.

Love,

*Robert + Linda*



and Samantha

& Pico

(Pico will be 15 years old on 21 August.)

(505) 265-1842 home (505) 858-8643 Robert work

**On the Web** [www.malseed.net](http://www.malseed.net)

**e-mail (new)** [RMalseed@comcast.net](mailto:RMalseed@comcast.net)

**e-mail (old)** [R\\_Malseed@compuserve.com](mailto:R_Malseed@compuserve.com)